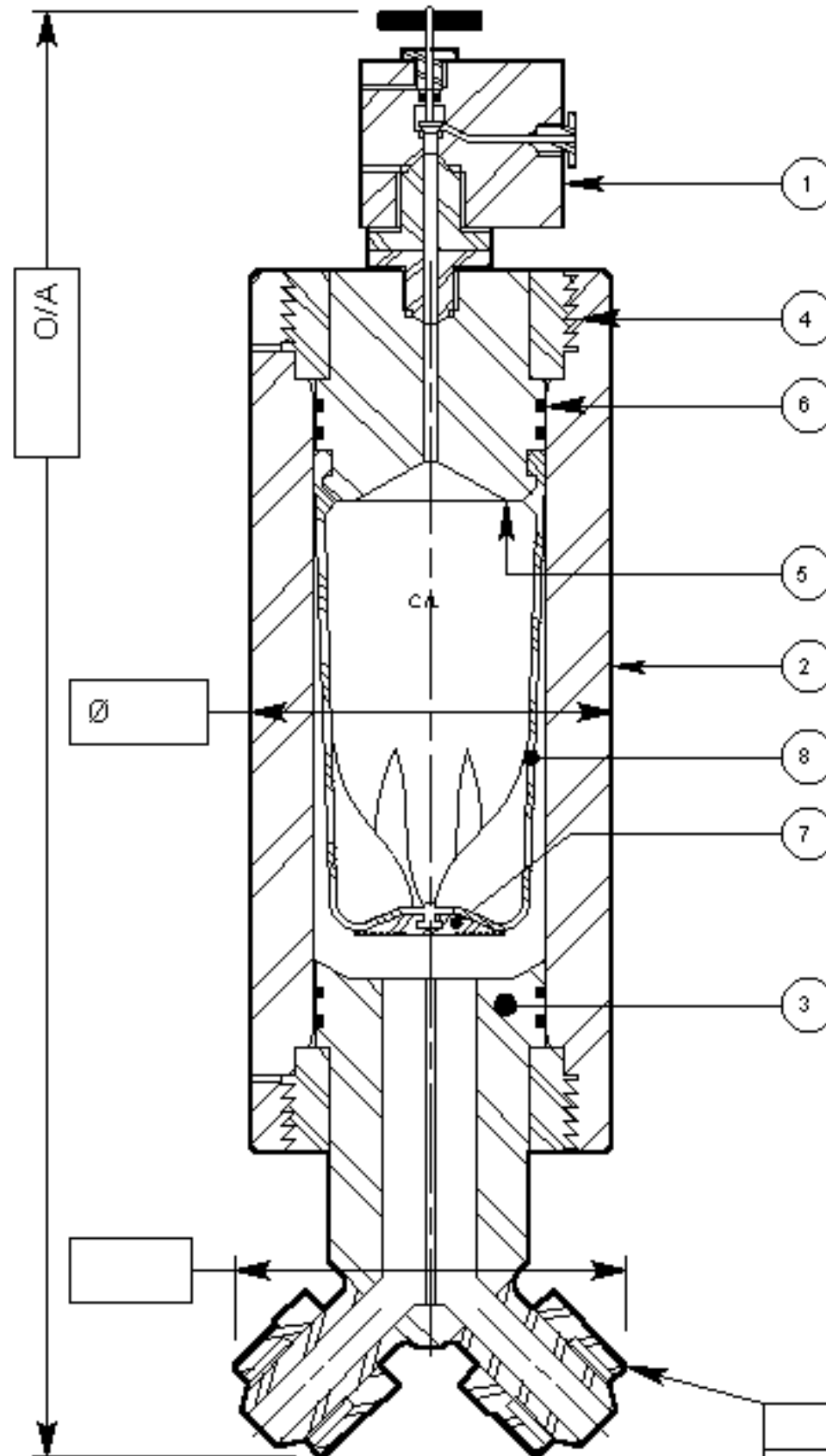


# PIG-TW PIPEGUARD



## TRUE THRU-FLOW

The pulse flows THROUGH the attenuation chamber. Not into a "false bottom"/"remote chamber". True Thru-Flow enables PULSE PREVENTION TO BE GUARANTEED.



**"L.D.I"**

Liquid Dynamics International.  
Dual Certification.

**ISO 9001 Vessel Code Certified**

Certified USA Plant  
OSC 97028 #29,289  
95-LOV-AQ-458

**"DESIGN & MANUFACTURE OF PRESSURE VESSELS"**  
copies of certificates & plan on request

Item	Part No.	Description	Material	I.D. #	CUSTOMER:
1	AE-15K	N2 Prefill Valve			CUSTOMER REF.:
2		Body			QUANTITY:
3		End-Closure			W/O No.:
4		Butress Ring			WEIGHT (EST.):
5		End-closure (N2)			W:
6		Seal - 90° IRH, A			ISSUED BY:
7		Anti-Extr. Button			CHECKED BY:
8		Gas Bag			(DAY/MONTH/YEAR)

**PULSEGUARD INC. LTD.**  
In Assoc. With Liquid Dynamics

www.pulsation-shock.com  
ISO 9001 VESSEL CODE # 29,289  
BOX 506, HAMPSTEAD, N.C. 28440, USA.  
Tel: 910-270-2737. Fax: 270-2739  
P.O. BOX 47, STOCKPORT, UK, SK5 7BB.  
Tel: 0161-442-6222. Fax: 443-1496

TITLE: **IN-LINE THRU-FLO, PUMP DECOMPRESSION SHOCK INTERCEPTOR**

APPLICATION: High pressure inhibitor, demulsifier and methanol etc. injection in corrosive / offshore platform environments - with stainless steel externals.

FILE REF: STD 18PIG.VLM/21-JUN-01

SCALE: NTS ALL DIMENSIONS ARE IN MM EXCEPT AS STATED.

VIEW NO. **PIG-TW+AE/**

SHEET: 1 OF 1

REV. 0