

PIG-PLAS PIPEGUARD



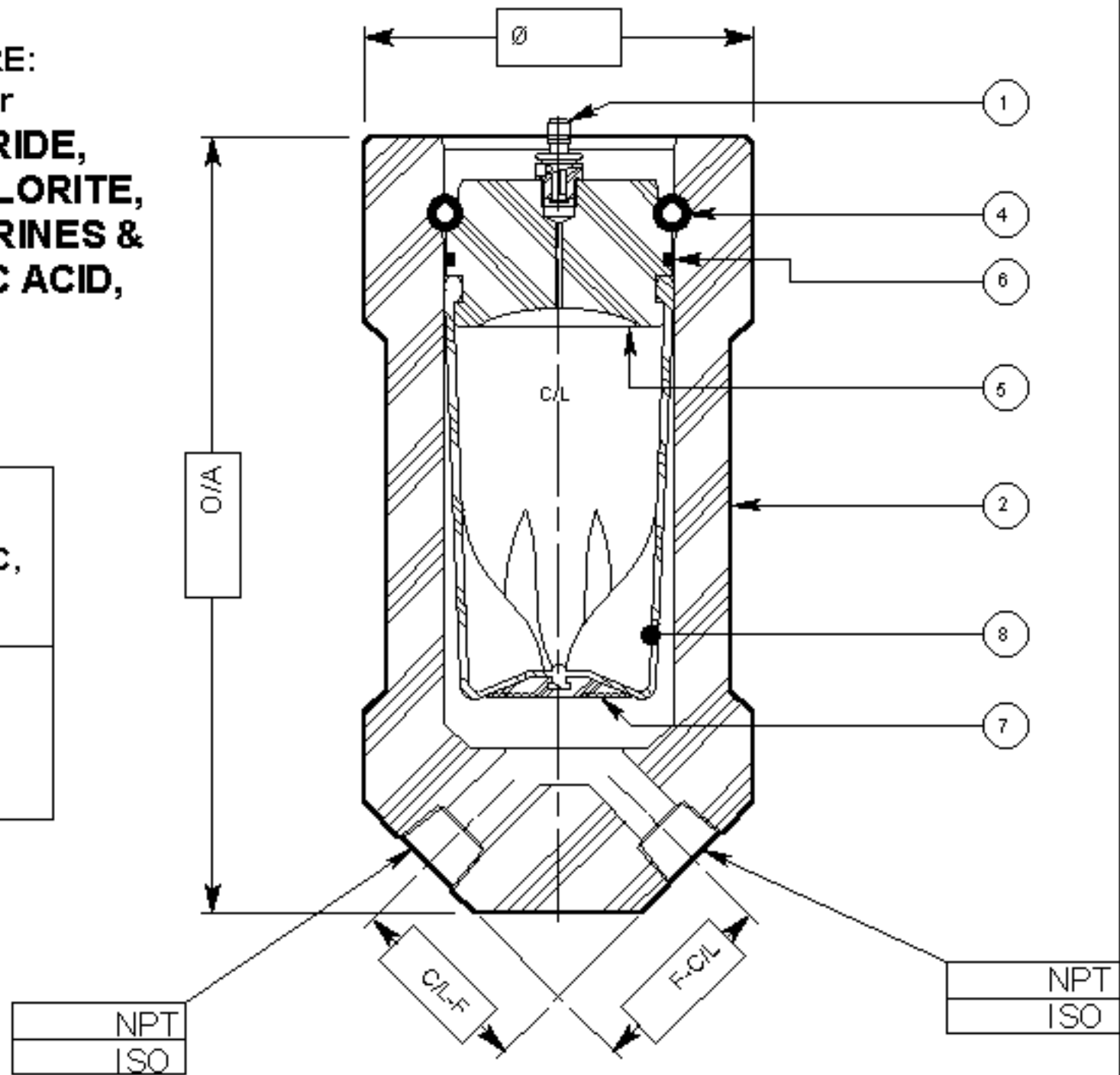
-TW* TWIN-PORTED - FLUSH-in-PLACE

TRUE THRU-FLOW

LOW PRESSURE:
Specially for
**FERRIC CHLORIDE,
SODIUM HYPOCHLORITE,
DISOLVED CHLORINES &
HYDROCHLORIC ACID,
etc.**

Body Materials:
**Polypropylene, PVC,
Nylon, etc.**

Bladder & Seal Materials:
**E.P.D.M., Hypalon,
Viton, etc.**



Item	Part No.	Description	Material	I.D. #
1	9019C	N2 Prefill	304 St. St.	
2		Body		
3				
4		Segments	Brass/Bronze	
5		End-closure		
6		Seal		
7		Anti-Extr. Button		
8		Bladder		

CUSTOMER:
CUSTOMER REF.:
QUANTITY:
W/O No.:
WEIGHT (EST.):
W:
ISSUED BY:
CHECKED BY:
ISSUE DATE: (DAY/MONTH/YEAR)

PULSEGUARD INC. LTD.
INSTRUMENTATION SPECIALISTS

www.pulsation-shock.com
ISO 9001 VESSEL CODE # 28.289
BOX 506, HAMPSTEAD, H.C. 28443, USA.
Tel: 910-270-2737. Fax: 270-2730
P.O. BOX 47, STOCKPORT, U.K. SK57 8B.
Tel: 0161-442-6222. Fax: 443-1486

TITLE: **IN-LINE PIPEGUARD
AND ACCUMULATOR**

APPLICATION: *
Intercept Instrument destabilising high frequency;
Prevent resonance; Stop acoustic waves; Address
acceleration headforms of PULSATION; all with
Flush-in-Place & Constant Temperature Features.

FILE REF: STD19PIG.VLM/04-JUL-01	
SCALE: NTS	ALL DIMENSIONS ARE IN MM EXCEPT AS STATED.
VIEW NO. PIG-PLAS/	
SHEET: 1 OF 1	REV. 0