

PuG

PUMP GUARD

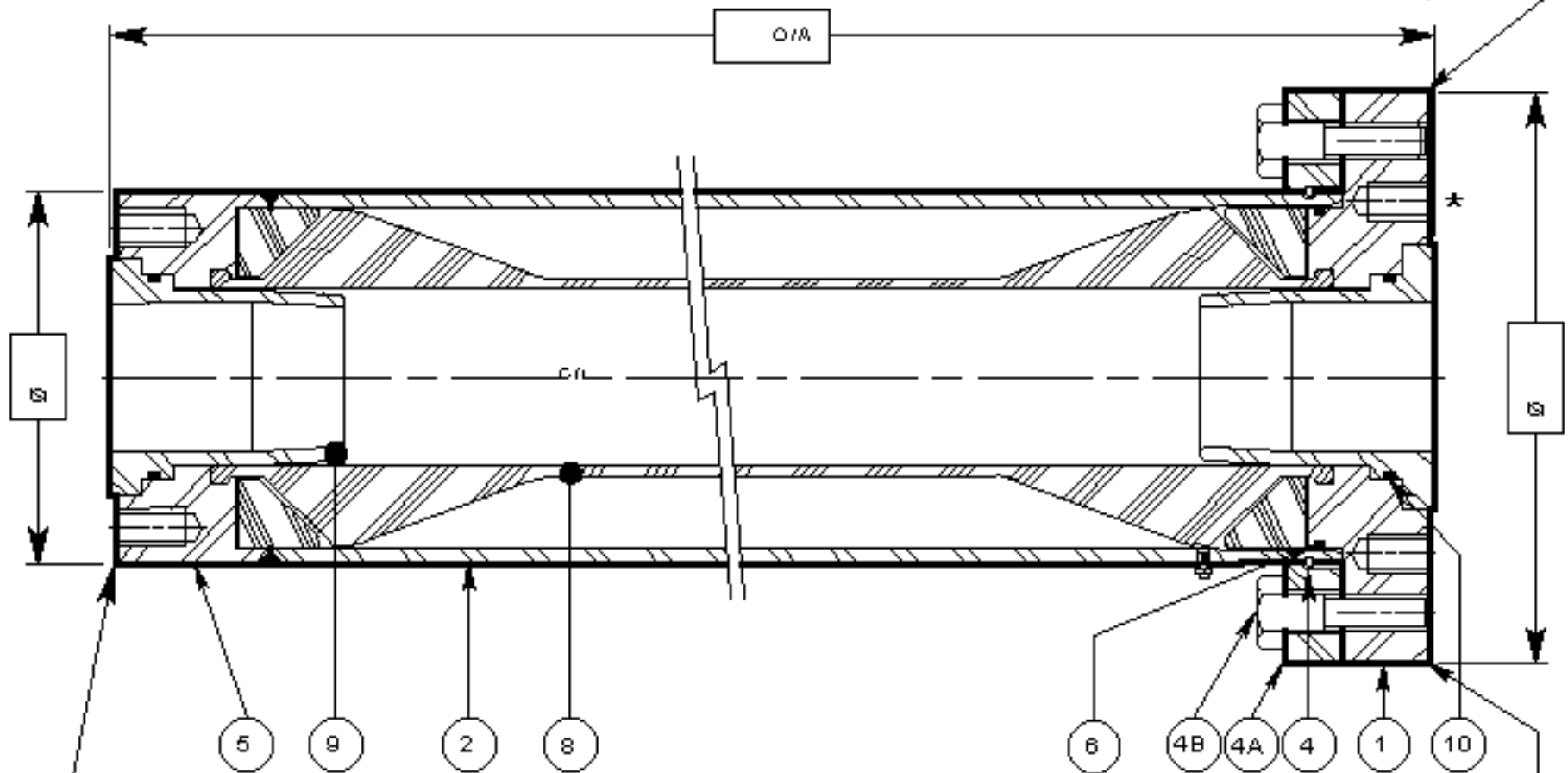


RF

"CLEAR FLOW" THRU-FLO

Raised Face Flanged

Alternative Construction when the PCD of the Flange Stud Bolt Holes (*) Exceeds the I/D of the Body.



ANSI B16.5/
DIN _____

ANSI B16.5/
DIN _____

Item	Part No.	Description	Material
1		Flange	
2		Body	
4		Tamper-Proof Lock-Ring	
4A+4B		Lock-Ring Support & Screws	
5		End-closure/Flange	
6		Diametral Seal (Body)	
7			
8		Tubular Bag & Seal	
9		Anchor Tube	
10		Diametral Seal for A-Tube (9)	

CUSTOMER:
CUSTOMER REF.:
QUANTITY:
W/O No.:
WEIGHT (EST.):
W:
ISSUED BY:
CHECKED BY:
ISSUE DATE: (DAY/MONTH/YEAR)
FILE REF: STD03PUG.VLM/24-AUG-01
SCALE: NTS
VIEW NO. PuG-PeC-RF/
SHEET: 1 OF 1
REV. 0

PULSE GUARD INC. LTD.
 1st Assoc. with Liquid Dynamics
 www.pulsation-shock.com
 ISO 9001 VESSEL CODE # 28.289
 BOX 506, HAMPSTEAD, N.C. 28443, USA.
 Tel: 910-270-2737. Fax: 270-2739
 P.O. BOX 47, STOCKPORT, UK, SK5 7BB.
 Tel: 0161-442-6222. Fax: 443-1486

TITLE: **CLEAR-FLO PULSATION PREVENTOR**

APPLICATION:
 SLURRIES & VISCOUS LIQUIDS.
 LIQUIDS CONTAINING GRIT, SAND & RELATIVELY
 LARGE SOLID OBJECTS. FOR USE IN SUCTION &
 LOW PRESSURE DISCHARGE LINES.

SCALE: NTS

ALL DIMENSIONS ARE IN MM EXCEPT AS STATED.

VIEW NO. PuG-PeC-RF/

SHEET: 1 OF 1

REV. 0